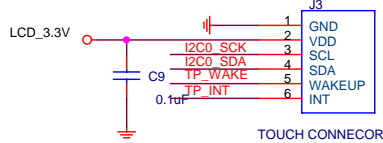
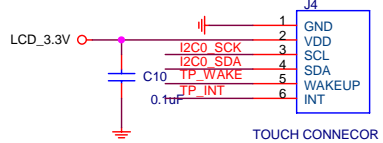


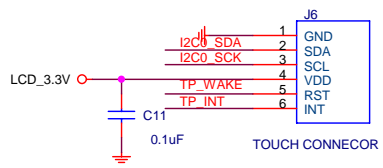
LCD BackLight



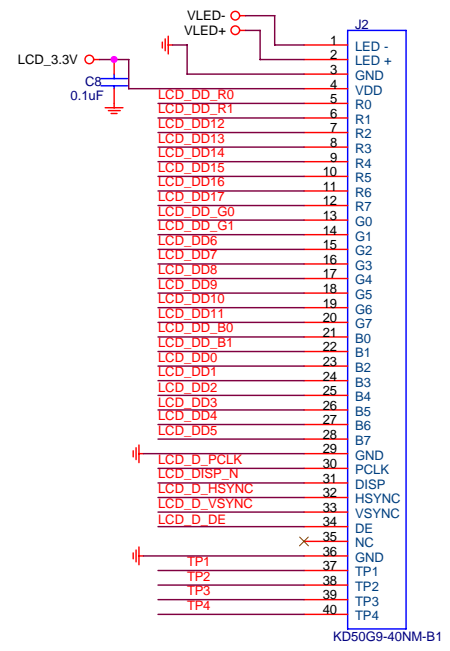
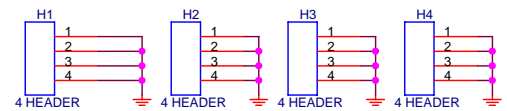
TOUCH CONNECTOR



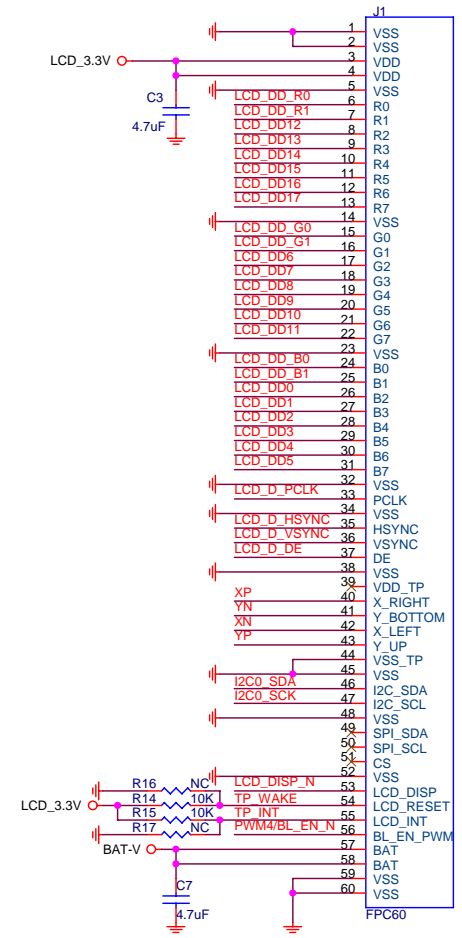
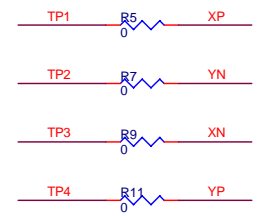
TOUCH CONNECTOR



TOUCH CONNECTOR



KD50G9-40NM-B1



FPC60

Use Goworld CTP default.  
If use BYD CTP, NC R14, R15  
and use R16,R17 10K.

<b>INGENIC Semiconductor Co.,Ltd.</b>		
Title RD4760_LEPUS_LCD		
Size B	Document Number LCD	Rev 1.2
Date:	Sunday, September 19, 2010	Sheet 1 of 2

Data	Revision	Change
July.29 2010	Rev1.2	1. Add Touch connector J3.
Sep.16 2010	Rev1.3	1. Add three Touch connectors J4,J6.

<b>INGENIC Semiconductor Co.,Ltd.</b>		
Title	RD4760_LEPUS_LCD	
Size B	Document Number LCD	Rev 1.2
Date:	Sunday, September 19, 2010	Sheet 2 of 2