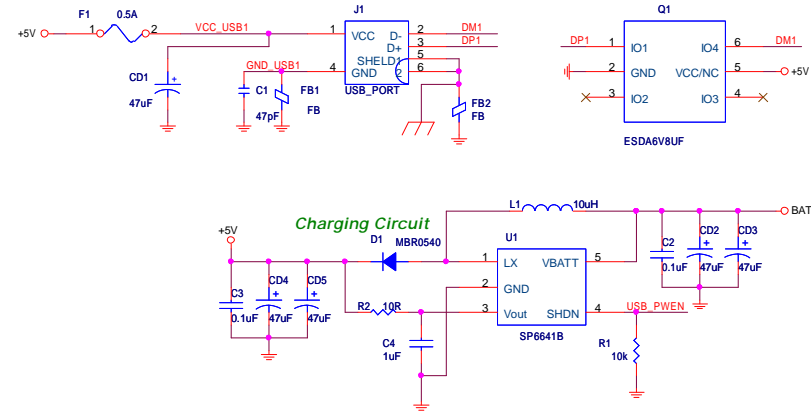
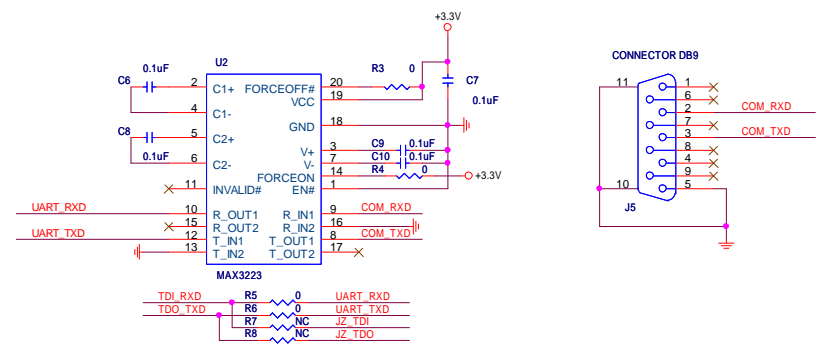
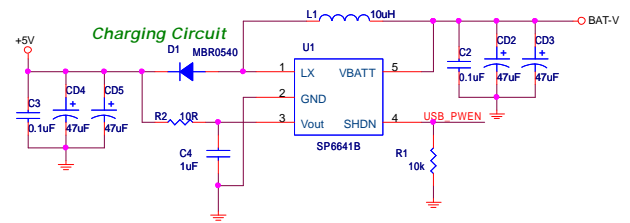


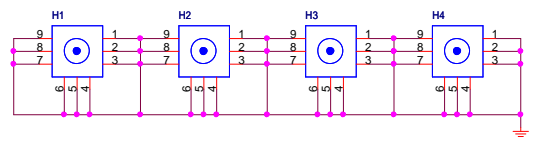
JTAG



USB2.0_HOST



UART/RS232



| | | |
|-------------------------------|--------------------------|--------------|
| INGENIC SEMICONDUCTOR CO.,LTD | | |
| Title | RD4780_GRUS_DEBUG | |
| Size | Document Number | Rev |
| A3 | USB2.0_HOST/UART/JTAG | 1.1 |
| Date: | Thursday, March 21, 2013 | Sheet 1 of 6 |

GPS RF Receiver core

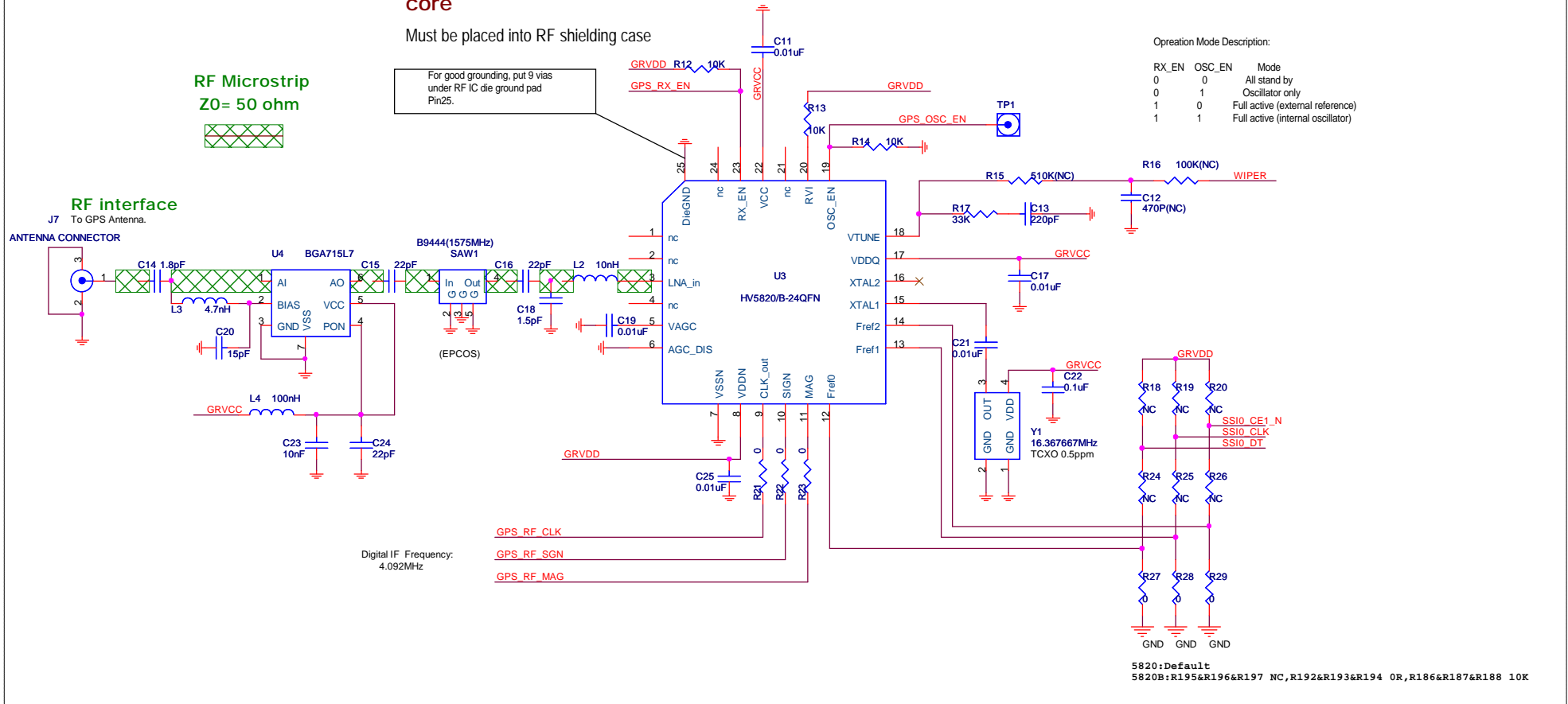
Must be placed into RF shielding case

RF Microstrip
Z0 = 50 ohm

For good grounding, put 9 vias under RF IC die ground pad Pin25.

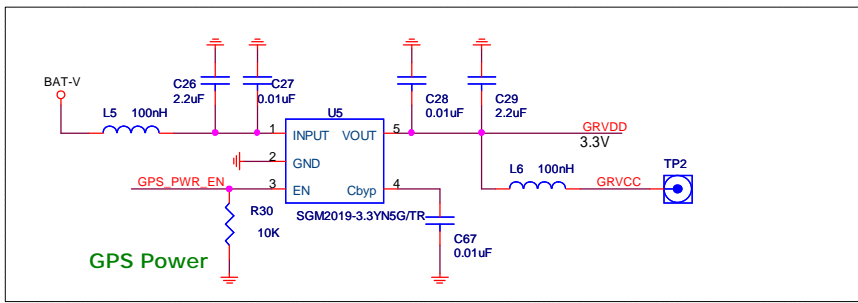
Operation Mode Description:

| RX_EN | OSC_EN | Mode |
|-------|--------|-----------------------------------|
| 0 | 0 | All stand by |
| 0 | 1 | Oscillator only |
| 1 | 0 | Full active (external reference) |
| 1 | 1 | Full active (internal oscillator) |



Digital IF Frequency: 4.092MHz

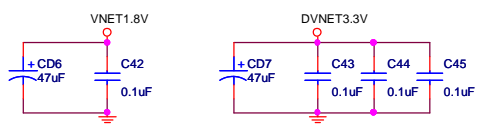
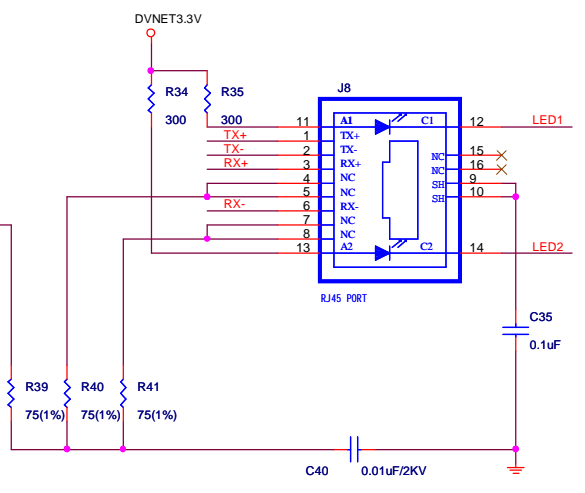
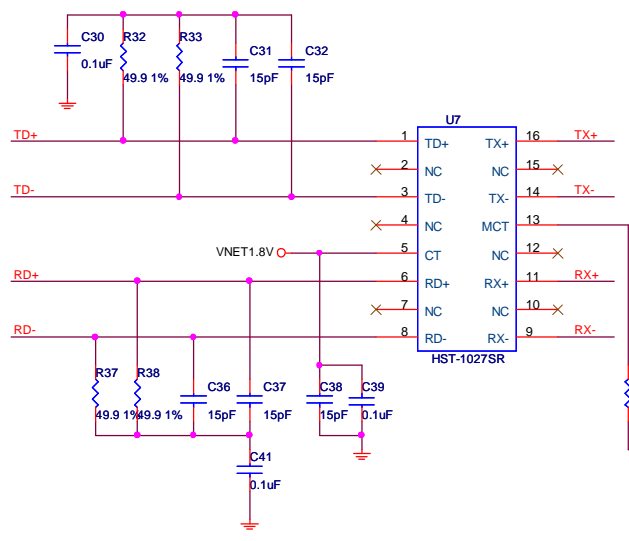
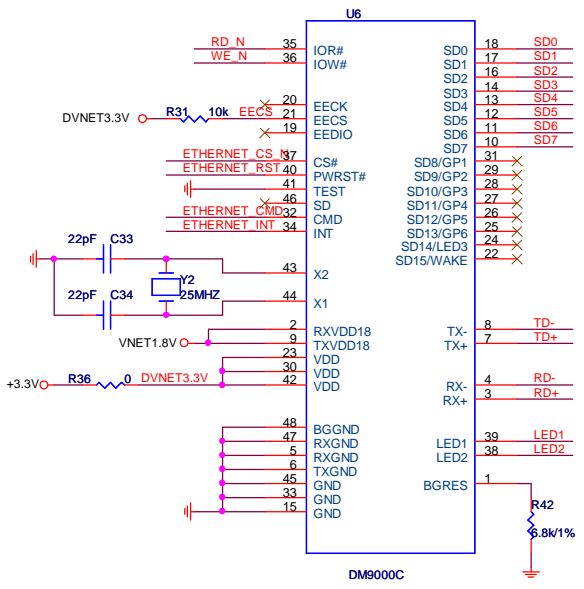
5820:Default
5820B:R195&R196&R197 NC,R192&R193&R194 0R,R186&R187&R188 10K



GPS Power

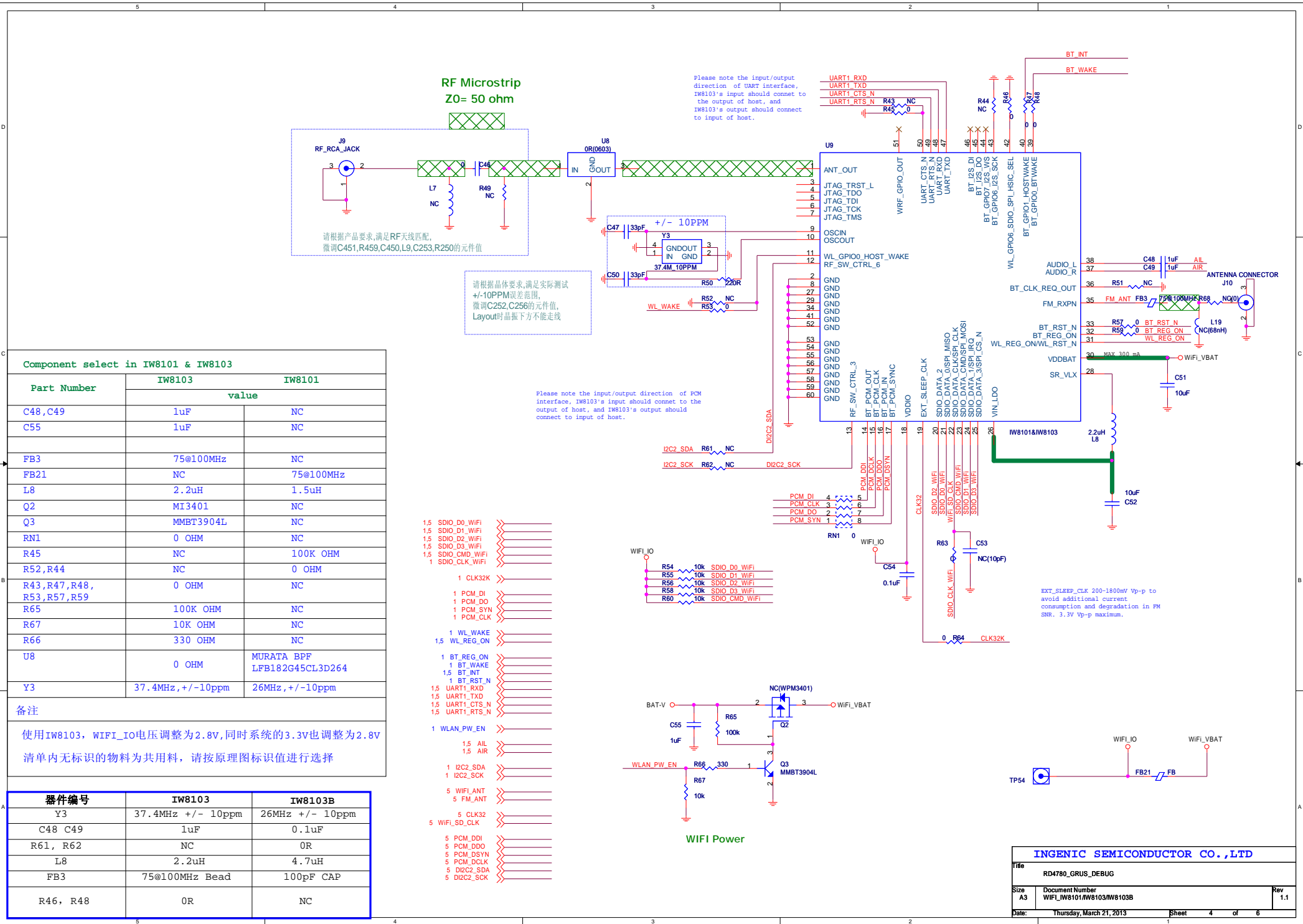
- WIPER 1
- SSIO_DT 1
- SSIO_CLK 1
- SSIO_CE1_N 1
- GPS_RX_EN 1
- GPS_OSC_EN 1
- GPS_RF_MAG 1
- GPS_RF_SGN 1
- GPS_RF_CLK 1
- GPS_PWR_EN 1

| | | |
|--------------------------------------|------------------------|------------|
| INGENIC SEMICONDUCTOR CO.,LTD | | |
| Title RD4780_GRUS_DEBUG | | |
| Size B | Document Number GPS | Rev 1.1 |
| Date: Thursday, March 21, 2013 | Sheet 2 | of 6 |



- RD_N 1
- WE_N 1
- ETHERNET_INT 1
- ETHERNET_CS_N 1
- SD[7:0] 1
- ETHERNET_RST 1
- ETHERNET_CMD 1

| | | |
|--------------------------------------|-----------------------------|------------|
| INGENIC SEMICONDUCTOR CO.,LTD | | |
| Title RD4780_GRUS_DEBUG | | |
| Size B | Document Number ETHERNET | Rev 1.1 |
| Date: Thursday, March 21, 2013 | Sheet 3 | of 6 |



Component select in IW8101 & IW8103

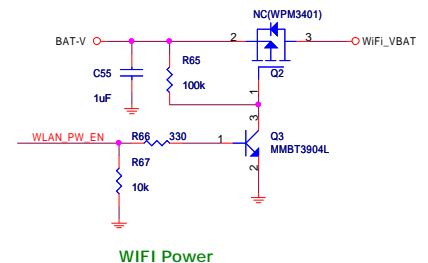
| Part Number | IW8103 | IW8101 |
|------------------------------|-------------------|-----------------------------|
| | value | |
| C48, C49 | 1uF | NC |
| C55 | 1uF | NC |
| FB3 | 75@100MHz | NC |
| FB21 | NC | 75@100MHz |
| L8 | 2.2uH | 1.5uH |
| Q2 | MI3401 | NC |
| Q3 | MMBT3904L | NC |
| RN1 | 0 OHM | NC |
| R45 | NC | 100K OHM |
| R52, R44 | NC | 0 OHM |
| R43, R47, R48, R53, R57, R59 | 0 OHM | NC |
| R65 | 100K OHM | NC |
| R67 | 10K OHM | NC |
| R66 | 330 OHM | NC |
| U8 | 0 OHM | MURATA BPF LFB182G45CL3D264 |
| Y3 | 37.4MHz, +/-10ppm | 26MHz, +/-10ppm |

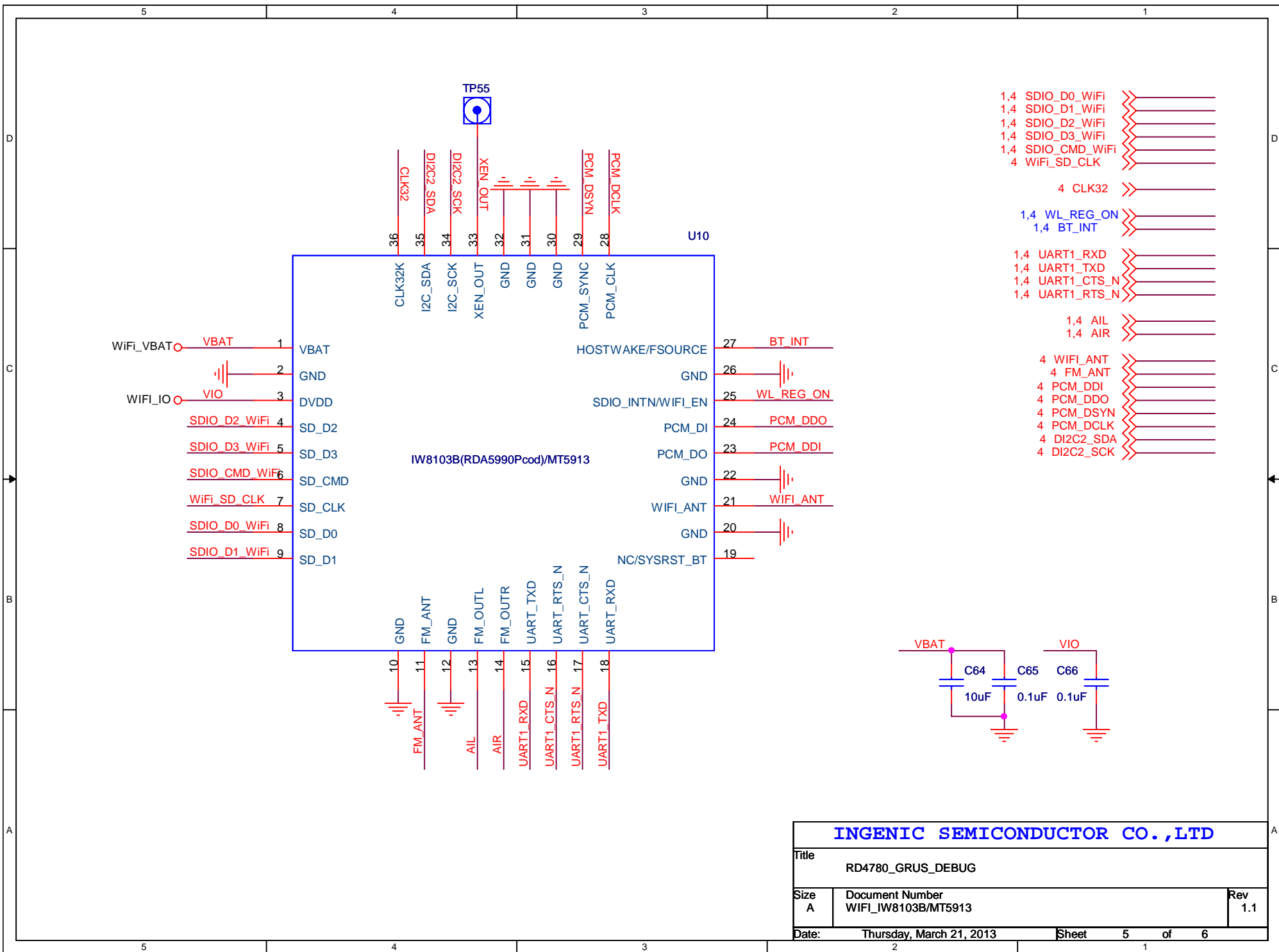
备注

使用IW8103, WIFI_IO电压调整为2.8V,同时系统的3.3V也调整为2.8V
清单内无标识的物料为共用料, 请按原理图标识值进行选择

| 器件编号 | IW8103 | IW8103B |
|----------|-------------------|-----------------|
| Y3 | 37.4MHz +/- 10ppm | 26MHz +/- 10ppm |
| C48 C49 | 1uF | 0.1uF |
| R61, R62 | NC | 0R |
| L8 | 2.2uH | 4.7uH |
| FB3 | 75@100MHz Bead | 100pF CAP |
| R46, R48 | 0R | NC |

- 1.5 SDIO_D0_WIFI >>>
- 1.5 SDIO_D1_WIFI >>>
- 1.5 SDIO_D2_WIFI >>>
- 1.5 SDIO_D3_WIFI >>>
- 1.5 SDIO_CMD_WIFI >>>
- 1 SDIO_CLK_WIFI >>>
- 1 CLK32K >>>
- 1 PCM_DI >>>
- 1 PCM_DO >>>
- 1 PCM_SYN >>>
- 1 PCM_CLK >>>
- 1 WL_WAKE >>>
- 1.5 WL_REG_ON >>>
- 1 BT_REG_ON >>>
- 1 BT_WAKE >>>
- 1.5 BT_INT >>>
- 1 BT_RST_N >>>
- 1.5 UART1_RXD >>>
- 1.5 UART1_TXD >>>
- 1.5 UART1_CTS_N >>>
- 1.5 UART1_RTS_N >>>
- 1 WLAN_PW_EN >>>
- 1.5 AIL >>>
- 1.5 AIR >>>
- 1 I2C2_SDA >>>
- 1 I2C2_SCK >>>
- 5 WIFI_ANT >>>
- 5 FM_ANT >>>
- 5 CLK32 >>>
- 5 WIFI_SD_CLK >>>
- 5 PCM_DDI >>>
- 5 PCM_DDO >>>
- 5 PCM_DSYN >>>
- 5 PCM_DCLK >>>
- 5 DI2C2_SDA >>>
- 5 DI2C2_SCK >>>





INGENIC SEMICONDUCTOR CO.,LTD

| | | | |
|-------|--------------------------|-------------------|--------|
| Title | | RD4780_GRUS_DEBUG | |
| Size | Document Number | Rev | |
| A | WIFI_IW8103B/MT5913 | 1.1 | |
| Date: | Thursday, March 21, 2013 | Sheet | 5 of 6 |

| Data | Revision | Change |
|-------------|----------|--|
| Sep 25 2012 | Rev1.0 | 1. First released Revision |
| Mar 21 2013 | Rev1.1 | 1. Change the net ETHERNET_CMD from pin26 to pin29 on PAGE01 2. Change R43 to NC and R45 to 0 ohm on PAGE04 |
| | | |
| | | |
| | | |

| | | |
|--------------------------------------|--------------------------|--------------|
| INGENIC SEMICONDUCTOR CO.,LTD | | |
| Title | RD4780_GRUS_DEBUG | |
| Size | Document Number | Rev |
| B | REVISION_HISTORY | 1.1 |
| Date: | Thursday, March 21, 2013 | Sheet 6 of 6 |