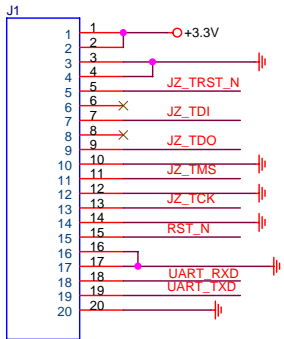
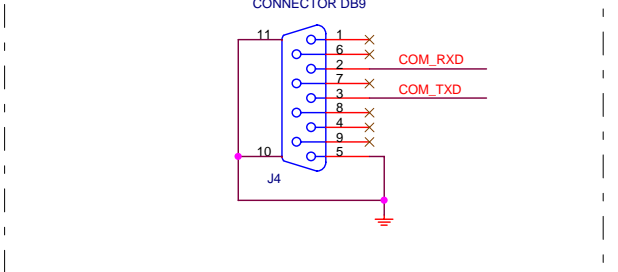
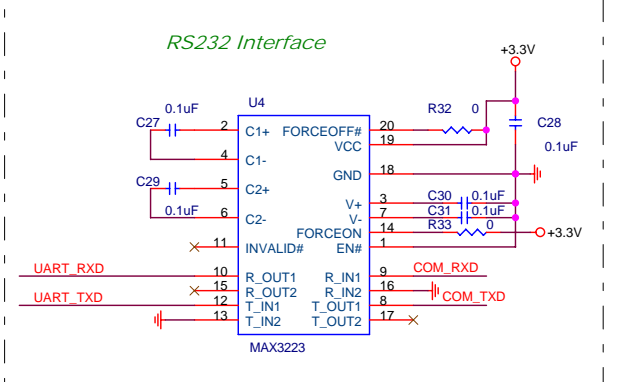
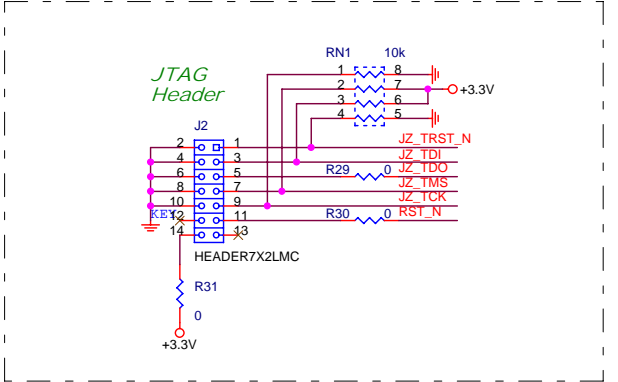
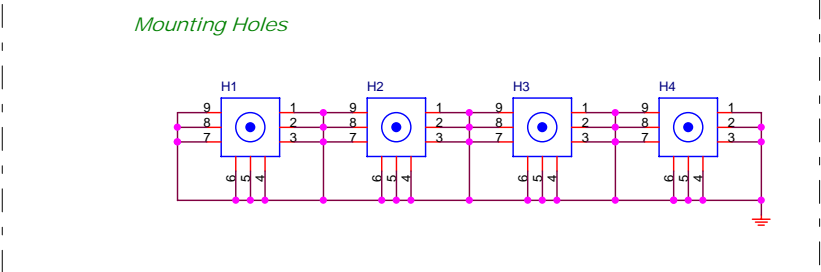
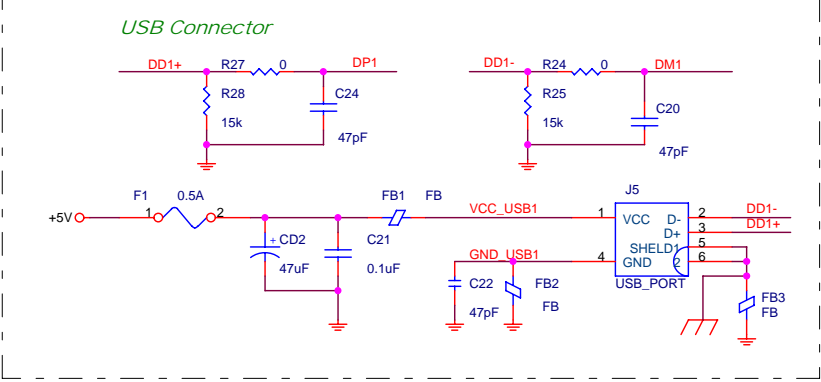
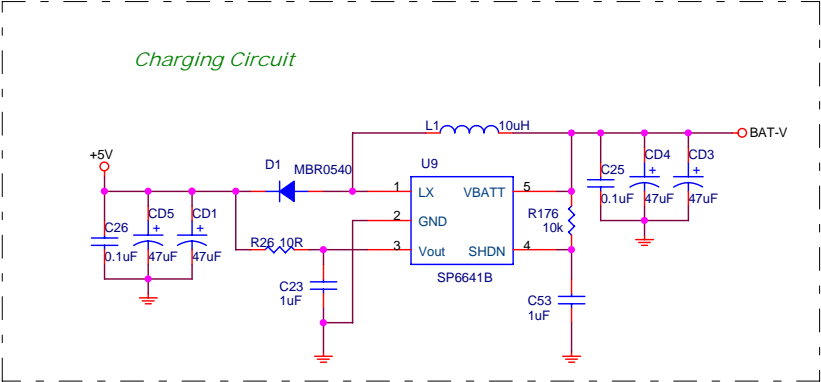
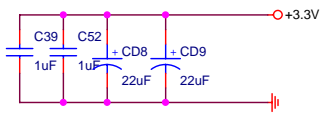


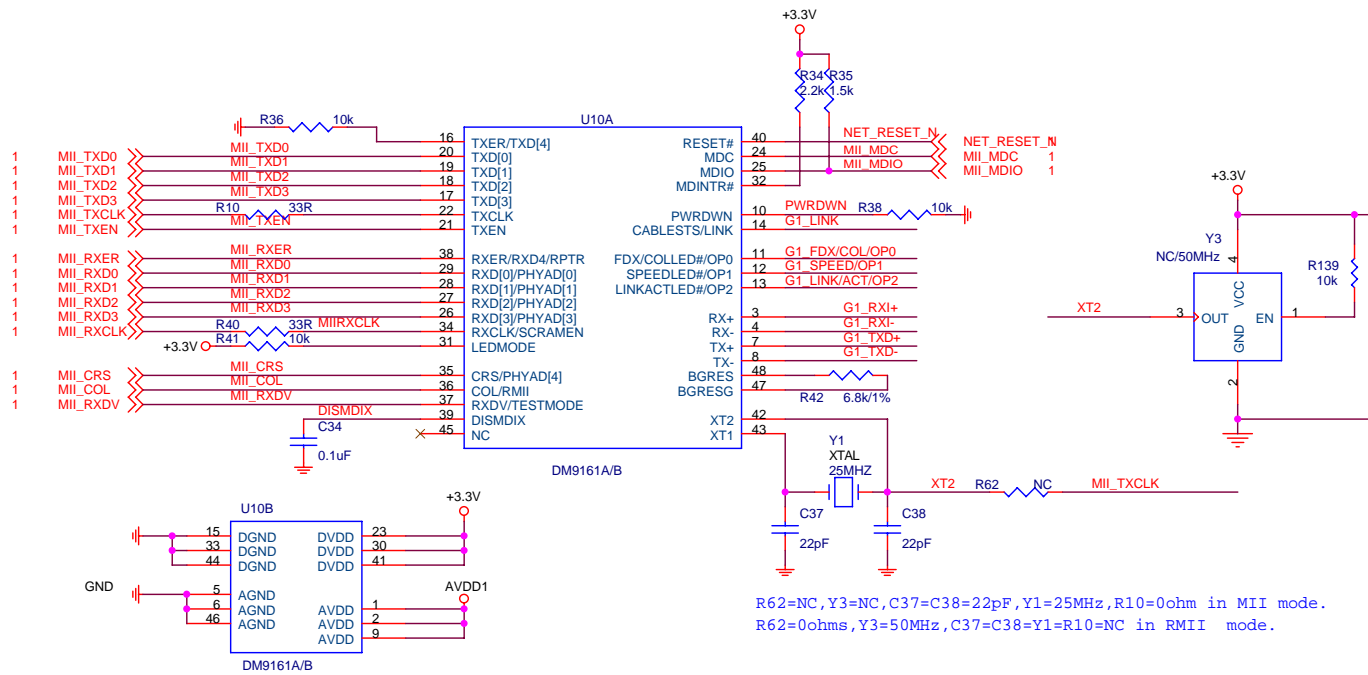
JDI & Uart & SPI & USB Con



JDI & Uart & SPI & U

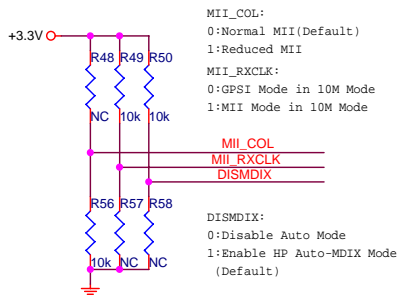
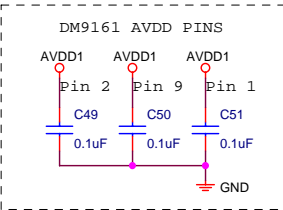
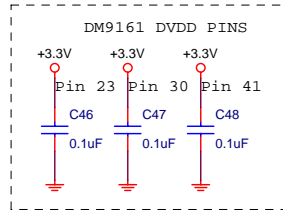
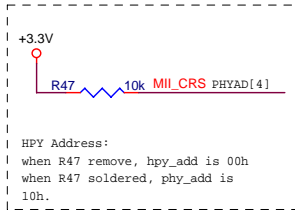
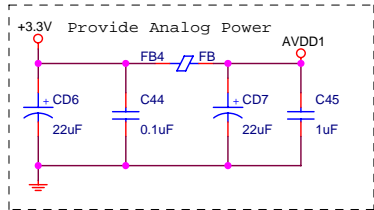


INGENIC Semiconductor Corporation		
Title		
RD4770_Pisces_Debug		
Size	Document Number	Rev
B	JTAG & UART & USB Host	1.1
Date:	Thursday, May 26, 2011	Sheet 1 of 3

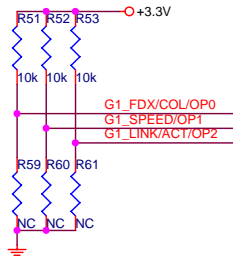


R62=NC, Y3=NC, C37=C38=22pF, Y1=25MHz, R10=0ohm in MII mode.
R62=0ohms, Y3=50MHz, C37=C38=Y1=R10=NC in RMI mode.

Place the capacitances near the pins

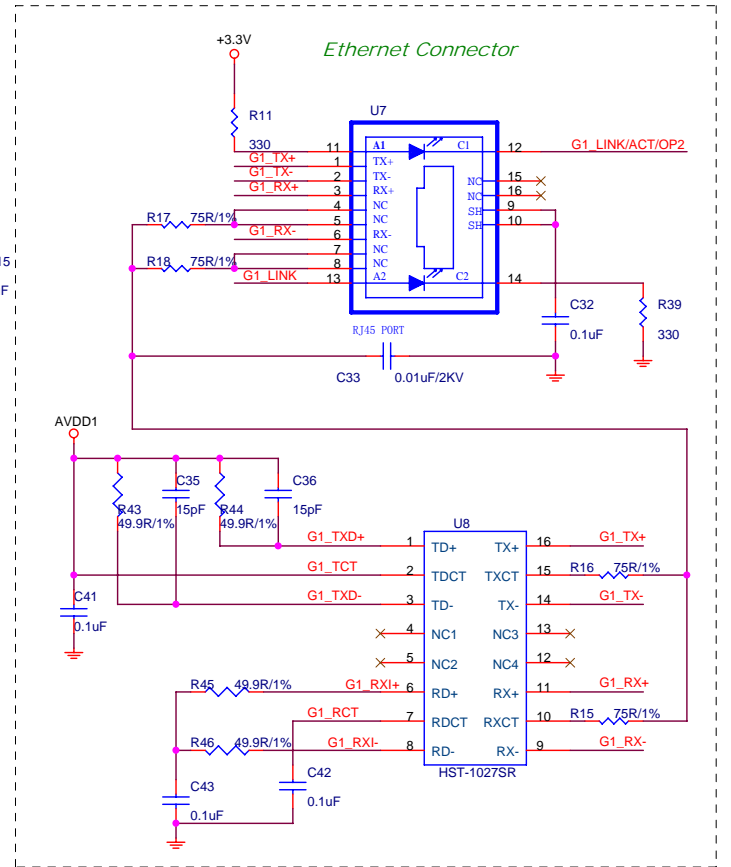


MIICOL:
0:Normal MII(Default)
1:Reduced MII
MIIRXCLK:
0:GPI Mode in 10M Mode
1:MII Mode in 10M Mode
DISMDIX:
0:Disable Auto Mode
1:Enable HP Auto-MDIX Mode (Default)

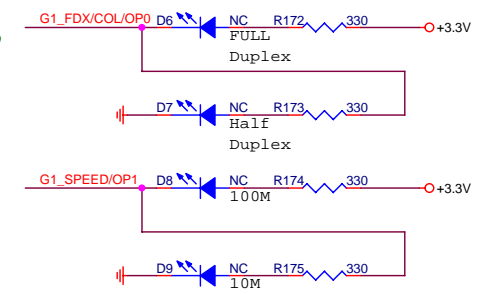


OP2	OP1	OP0	Function
0	0	0	Dual Speed 100/10 HDX
0	0	1	Reserved
0	1	0	Reserved
0	1	1	Manually Select 10TX HDX
1	0	0	Manually Select 10TX FDX
1	0	1	Manually Select 100TX HDX
1	1	0	Manually Select 100TX FDX
1	1	1	Auto-negotiation Enables All Capabilities

Option



Indicator LED



INGENIC Semiconductor Corporation

Title		
RD4770_Pisces_Debug		
Size	Document Number	Rev
B	ETHERNET	1.1
Date:	Thursday, May 26, 2011	Sheet 2 of 3

Data

Revision

Change

Apr.28 2011	Rev1.0	1. First released Revision
May.23 2011	Rev1.1	1. Add R10 and Y3, R139, C15 for RMI. 2. Add R176 and C53.

INGENIC Semiconductor Corporation

Title		
RD4770_Pisces_Debug		
Size	Document Number	Rev
B	REVISION HISTORY	1.1
Date:	Thursday, May 26, 2011	Sheet 3 of 3